

WORKHORSE™ Professional Grade

PG24-PG44 REVERSE OSMOSIS SYSTEM

- ◆ Pre-engineered for maximum versatility in a standard product line
- ◆ Expandable Configuration
- ◆ Variable Voltage 208v/240v/480v/575v , 3Phase
- ◆ Adjustable Recovery 50-75% For Water Conservation
- ◆ Optional Integrated Pretreatment Injection
Configurations:
Chlorine Destruct/Antiscalent
Optional Integrated Clean In Place System
- ◆ Automatic Membrane Feed Flush On Start
- ◆ Programmable Auto-Flush
- ◆ Product Divert
- ◆ Membrane Isolation Test Ports
- ◆ Tank Full High/ Tank Full Low/Low Level Float Inputs
- ◆ Powder-coated Aluminum Frame
- ◆ Rust Free Design

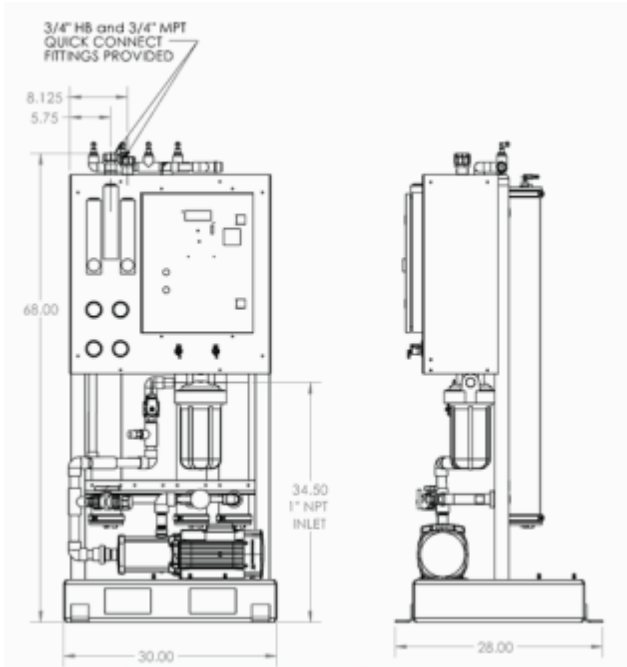
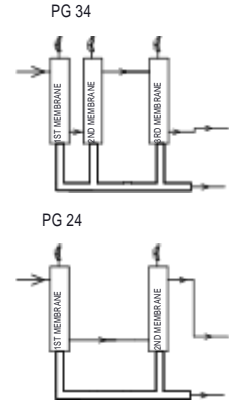
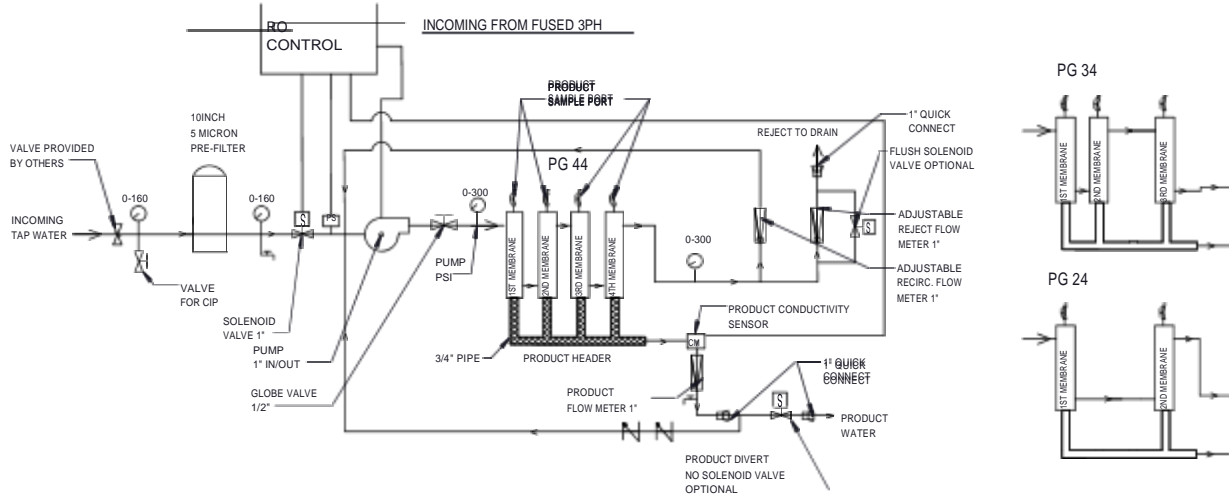
DESIGN PARAMETERS

MODEL	PG 24	PG 34	PG 44
PERFORMANCE			
Nominal Rejection	99%	99%	99%
Production (GPD)*	4000	6000	8000
Product Flow (GPM)*	2.8	4.2	5.6
Recovery			
ELECTRICAL			
Three Phase	208-230V/440-480 (Check label)		
Horsepower/AMPS	3.4 HP//8.95-8.5/4-3.4		
MEMBRANES			
Size (in)	4" X 40"	4" X 40"	4" X 40"
Quantity	2	3	4
Type	Spiral Composite Polyimide		
FEED WATER REQUIREMENTS			
Chlorine Tolerance	<0.1 PPM		
Temperature	Maximum 133°F (45 °C)		
Operating pH Range	2-10		
Cleaning pH	1-12		
Pre-Filtration	5 micron		
Membrane Pressure Range (PSIG)	120-160		
Max. Fouling Index (SDI)	<5.0		
DIMENSIONAL DATA			
Connections	Inlet 1" FIP, Outlet 3/4" QC, Drain 3/4" QC		
H x W x D	76" X 33" X 30"		



PG24-PG44 REVERSE OSMOSIS SYSTEM

FLOW SCHEMATIC



Product flow rate varies with temperature, all models are rated at 77° F (25°C) with feed water of 1500 ppm NaCl Solution @ 150 psi applied pressure.

Temperature	Product Flow GPM/GPD		
	77 F/25 C	62 F/17 C	50 F/10 C
Model			
PG 24	2.8/4000	2.2/3100	1.8/2500
PG 34	4.2/6000	3.3/4600	2.6/3700
PG 44	5.6/8000	4.3/6200	3.5/5000
PG 54	6.9/10000	5.4/7800	4.4/6300
PG 64	8.3/12000	6.5/9300	5.3/7500
PG 74	9.3/14000	7.6/10900	6.1/8800
PG 84	11.1/16000	8.7/12400	7/10000
PGI 38	20.8/30000	16.2/23400	13.1/18900
PGI 48	27.7/40000	21.6/31200	17.5/25200



Membrane test ports for isolation pro ling